

\$172,500 - 2 10520 80 Avenue, Edmonton

MLS® #E4431174

\$172,500

1 Bedroom, 1.00 Bathroom, 710 sqft

Condo / Townhouse on 0.00 Acres

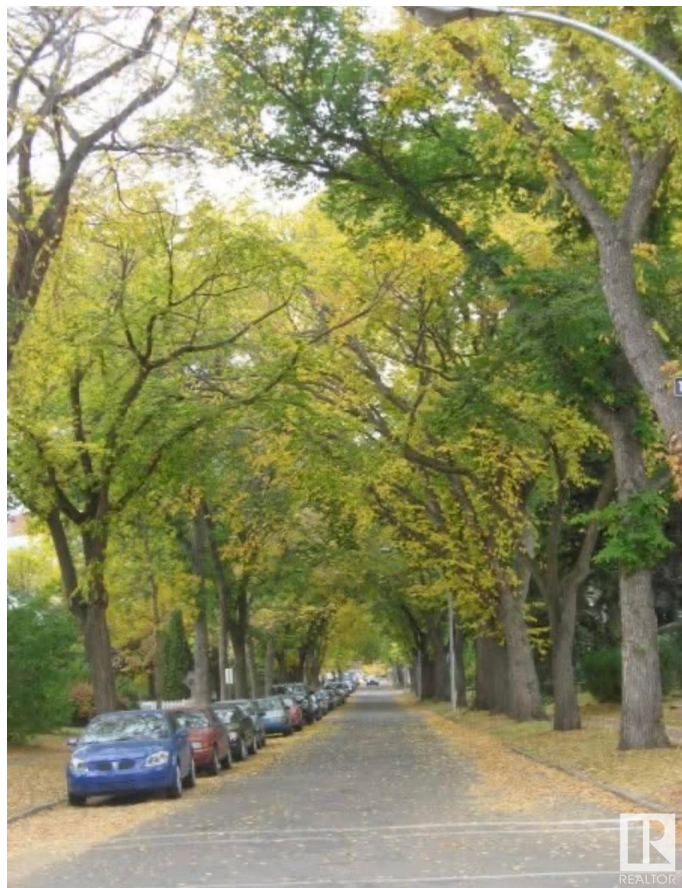
Queen Alexandra, Edmonton, AB

Check out this stylish 710 sq ft one-bedroom condo near Whyte Ave. Perfect for a young couple, university student, or savvy professional, this charming one-bedroom, one-bath unit offers comfort and convenience in one of Edmonton's most vibrant neighborhoods. Just a few blocks from the iconic Whyte Avenue, you'll enjoy a cozy living space complete with a private south facing shaded patio—ideal for relaxing summer evenings. The spacious bedroom includes ample closet space, while in-suite laundry and extra storage add everyday ease and practicality. Live close to all the action—shops, restaurants, the Fringe & other happening events, the University of Alberta, and public transit are all within easy reach.

Built in 1981

Essential Information

MLS® #	E4431174
Price	\$172,500
Bedrooms	1
Bathrooms	1.00
Full Baths	1
Square Footage	710
Acres	0.00
Year Built	1981



Type	Condo / Townhouse
Sub-Type	Lowrise Apartment
Style	Single Level Apartment
Status	Active

Community Information

Address	2 10520 80 Avenue
Area	Edmonton
Subdivision	Queen Alexandra
City	Edmonton
County	ALBERTA
Province	AB
Postal Code	T6E 1V3

Amenities

Amenities	On Street Parking, Detectors Smoke, Intercom, No Smoking Home, Parking-Plug-Ins, Patio, Security Door, Storage-In-Suite
Parking	Stall

Interior

Appliances	Dishwasher-Built-In, Microwave Hood Fan, Refrigerator, Stacked Washer/Dryer, Stove-Electric
Heating	Hot Water, Natural Gas
# of Stories	4
Stories	4
Has Basement	Yes
Basement	None, No Basement

Exterior

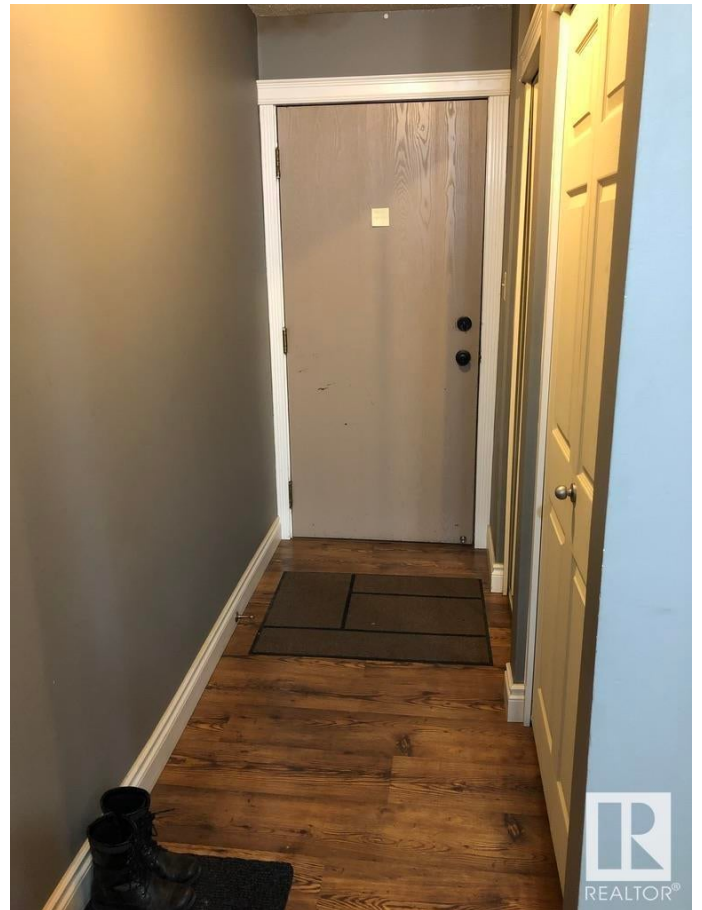
Exterior	Wood, Stucco
Exterior Features	Back Lane, Paved Lane, Public Transportation, Schools, Shopping Nearby, Treed Lot
Roof	Asphalt Shingles
Construction	Wood, Stucco
Foundation	Concrete Perimeter

Additional Information

Date Listed	April 16th, 2025
Days on Market	3
Zoning	Zone 15

Condo Fee

\$386



DATA IS DEEMED RELIABLE BUT IS NOT GUARANTEED ACCURATE BY THE REALTORS® ASSOCIATION OF EDMONTON. COPYRIGHT 2025 BY THE REALTORS® ASSOCIATION OF EDMONTON. ALL RIGHTS RESERVED. Trademarks are owned or controlled by the Canadian Real Estate Association (CREA) and identify real estate professionals who are members of CREA (REALTOR®, REALTORS®) and/or the quality of services they provide (MLS®, Multiple Listing Service®)

Listing information last updated on April 19th, 2025 at 4:47pm MDT