

Courtesy Of Sarah J Leib Of RE/MAX River City

\$454,800 - 315 39 Avenue, Edmonton

MLS® #E4430334

\$454,800

3 Bedroom, 2.50 Bathroom, 1,470 sqft
Single Family on 0.00 Acres

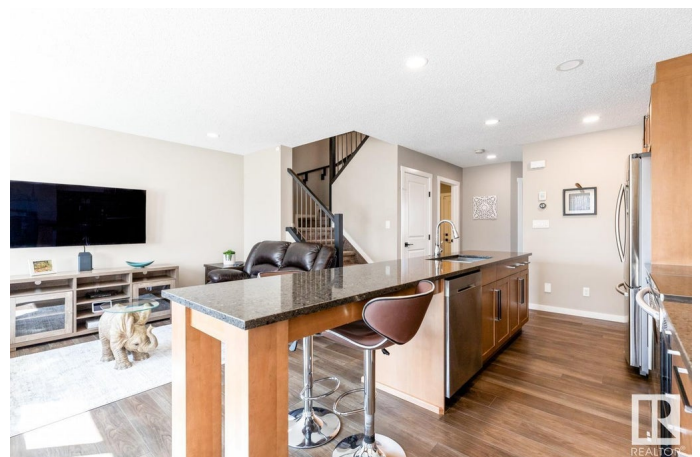
Maple Crest, Edmonton, AB

MARVELOUS MAPLE CREST! A Former Showhome is move-in ready! A Kitchen features large island, spacious corner pantry & cabinets that extend up to the ceiling. A Full-height Tile Backsplash & Stainless Steel Appliances. A Primary Bedroom has an ample walk-in closet & ensuite w/ a spa-like five-foot walk-in shower. A Two additional A Bedrooms & a full Bath can be found on the upper level. A A Bonus: A AIR CONDITIONING, Heated Garage, Quartz Countertops throughout & UPPER FLOOR LAUNDRY! A Basement roughed-in for bath & has large windows for plenty of light. A SOUTH YARD, BACKING ONTO TREED, GREEN SPACE w/ Gas BBQ Line, Deck & Hot Tub rough-in. Built using the Superior Silence system (no shared walls or floor joists) so there is minimal A sound transmission between the properties. A Community is ideally located just minutes from major shopping centers & a transit hub. Easy access to the Henday & Airport. Enjoy walking trails, creeks & greenspaces! A Opportunity for Multi-Generational Families looking for Side by Side Duplexes.

Built in 2019

Essential Information

MLS® # E4430334



Price	\$454,800
Bedrooms	3
Bathrooms	2.50
Full Baths	2
Half Baths	1
Square Footage	1,470
Acres	0.00
Year Built	2019
Type	Single Family
Sub-Type	Half Duplex
Style	2 Storey
Status	Active

Community Information

Address	315 39 Avenue
Area	Edmonton
Subdivision	Maple Crest
City	Edmonton
County	ALBERTA
Province	AB
Postal Code	T6T 2K1

Amenities

Amenities	Air Conditioner, Deck, No Smoking Home
Parking	Heated, Single Garage Attached

Interior

Interior Features	ensuite bathroom
Appliances	Dishwasher-Built-In, Dryer, Garage Control, Garage Opener, Microwave Hood Fan, Refrigerator, Stove-Electric, Washer, Window Coverings
Heating	Forced Air-1, Natural Gas
Stories	2
Has Basement	Yes
Basement	Full, Unfinished

Exterior

Exterior	Wood, Brick, Vinyl
Exterior Features	Airport Nearby, Backs Onto Park/Trees, Landscaped, No Back Lane, Park/Reserve, Playground Nearby, Private Setting, Public

Transportation, Schools, Shopping Nearby

Roof Asphalt Shingles
Construction Wood, Brick, Vinyl
Foundation Concrete Perimeter

School Information

Elementary Julia Kiniski/St Kateri
Middle Themla Chalifoux/F M Troy
High Dr F Whiskeyjack/Austin O

Additional Information

Date Listed April 11th, 2025
Days on Market 9
Zoning Zone 30

DATA IS DEEMED RELIABLE BUT IS NOT GUARANTEED ACCURATE BY THE REALTORS® ASSOCIATION OF EDMONTON. COPYRIGHT 2025 BY THE REALTORS® ASSOCIATION OF EDMONTON. ALL RIGHTS RESERVED. Trademarks are owned or controlled by the Canadian Real Estate Association (CREA) and identify real estate professionals who are members of CREA (REALTOR®, REALTORS®) and/or the quality of services they provide (MLS®, Multiple Listing Service®)

Listing information last updated on April 20th, 2025 at 7:02pm MDT