

## \$190,000 - 228 3425 19 Street, Edmonton

MLS® #E4429669

**\$190,000**

2 Bedroom, 2.00 Bathroom, 865 sqft

Condo / Townhouse on 0.00 Acres

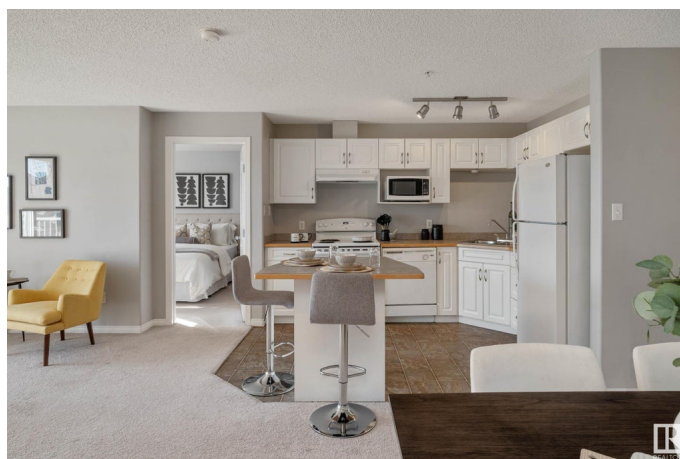
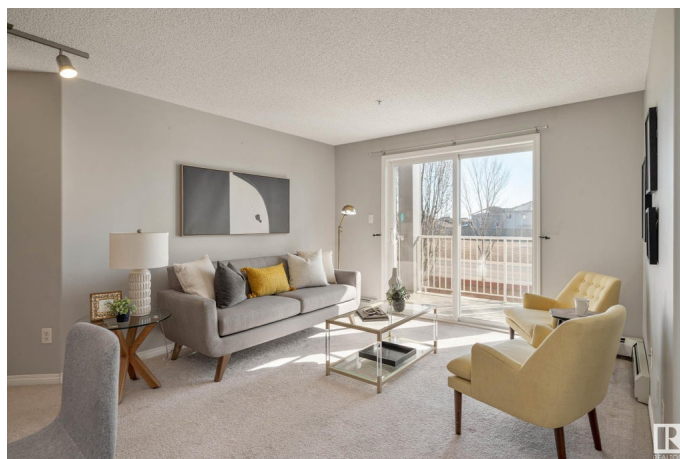
Wild Rose, Edmonton, AB

Easy Living at Park Place Meadows! This well maintained condo has an excellent layout for comfortable living. The open living, dining and kitchen offers plenty of space and enough room for a full sized dining table. Walk out to your balcony from the living room. On one side of the living area you will find the primary bedroom with a walk in closet - complete with closet organizers and a 4 pc ensuite. The 2nd full-sized bedroom and 4 pc main bath complete the other side giving good separation, from roommates, family, or guests. You will also find an in-suite laundry and a large dedicated storage room within the unit. Close to Whitemud Drive, Anthony Henday and Sherwood Park. With shopping and restaurants around the corner, this condo is a must see!

Built in 2005

### Essential Information

|                |           |
|----------------|-----------|
| MLS® #         | E4429669  |
| Price          | \$190,000 |
| Bedrooms       | 2         |
| Bathrooms      | 2.00      |
| Full Baths     | 2         |
| Square Footage | 865       |
| Acres          | 0.00      |
| Year Built     | 2005      |



|          |                        |
|----------|------------------------|
| Type     | Condo / Townhouse      |
| Sub-Type | Lowrise Apartment      |
| Style    | Single Level Apartment |
| Status   | Active                 |

### Community Information

|             |                    |
|-------------|--------------------|
| Address     | 228 3425 19 Street |
| Area        | Edmonton           |
| Subdivision | Wild Rose          |
| City        | Edmonton           |
| County      | ALBERTA            |
| Province    | AB                 |
| Postal Code | T6T 2B5            |

### Amenities

|           |  |
|-----------|--|
| Amenities | Parking-Plug-Ins, Parking-Visitor, Party Room, Security Door, Storage-In-Suite |
| Parking   | Stall  |

### Interior

|                   |   |
|-------------------|---|
| Interior Features | ensuite bathroom  |
| Appliances        | Dishwasher-Built-In, Hood Fan, Oven-Microwave, Refrigerator, Stacked Washer/Dryer, Stove-Electric, Window Coverings |
| Heating           | Baseboard, Natural Gas  |
| # of Stories      | 4   |
| Stories           | 1   |
| Has Basement      | Yes   |
| Basement          | None, No Basement   |

### Exterior

|                   |                              |
|-------------------|------------------------------|
| Exterior          | Wood, Vinyl                  |
| Exterior Features | Golf Nearby, Shopping Nearby |
| Roof              | Asphalt Shingles             |
| Construction      | Wood, Vinyl                  |
| Foundation        | Concrete Perimeter           |

### School Information

|            |                  |
|------------|------------------|
| Elementary | Velma E. Baker   |
| Middle     | Thelma Chalifoux |

High

Elder Dr. Francis

Additional Information

Date Listed

April 8th, 2025

Days on Market

11

Zoning

Zone 30

Condo Fee

\$474

DATA IS DEEMED RELIABLE BUT IS NOT GUARANTEED ACCURATE BY THE REALTORS® ASSOCIATION OF EDMONTON. COPYRIGHT 2025 BY THE REALTORS® ASSOCIATION OF EDMONTON. ALL RIGHTS RESERVED.Trademarks are owned or controlled by the Canadian Real Estate Association (CREA) and identify real estate professionals who are members of CREA (REALTOR®, REALTORS®) and/or the quality of services they provide (MLS®, Multiple Listing Service®)

Listing information last updated on April 19th, 2025 at 4:32am MDT