

Courtesy Of John Rota Of Sweetly

## \$450,000 - 20 Lindsay Crescent, Spruce Grove

MLS® #E4422020

**\$450,000**

6 Bedroom, 3.00 Bathroom, 1,321 sqft  
Single Family on 0.00 Acres

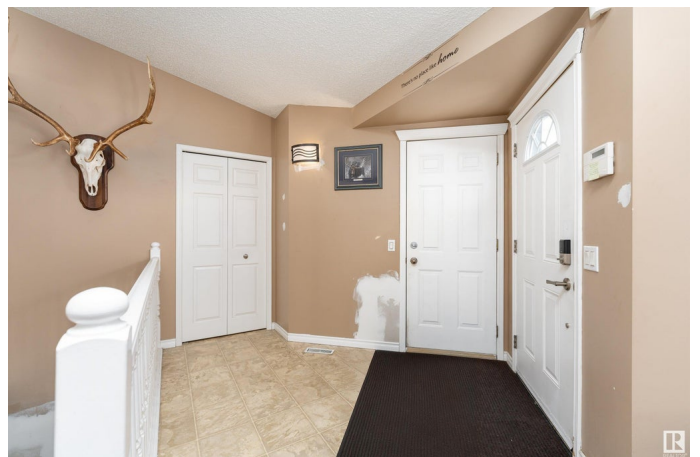
Lakewood\_SPGR, Spruce Grove, AB

Welcome to this charming bungalow in Spruce Grove's Lakewood community! Featuring a vaulted ceiling, the main floor feels bright and open, with a cozy living room and a dining area overlooking the fenced, landscaped yard. The kitchen is well-equipped with ample counter space, a double sink, modern stainless steel appliances, and plenty of cabinetry. The primary bedroom offers a walk-in closet and a 3-piece ensuite, while two additional bedrooms, a 4-piece bathroom, and a convenient laundry room complete the main level. The basement expands your living space with a large recreation room featuring a cozy fireplace, a den, three more bedrooms, a 3-piece bathroom, a storage room, and a utility room. An attached double garage adds extra convenience. Situated on a flat site close to parks, schools, and amenities, this home is perfect for families or anyone seeking comfortable, single-level living with extra space.

Built in 1994

### Essential Information

MLS® #	E4422020
Price	\$450,000
Bedrooms	6
Bathrooms	3.00



Full Baths	3
Square Footage	1,321
Acres	0.00
Year Built	1994
Type	Single Family
Sub-Type	Detached Single Family
Style	Bungalow
Status	Active

### **Community Information**

Address	20 Lindsay Crescent
Area	Spruce Grove
Subdivision	Lakewood_SPGR
City	Spruce Grove
County	ALBERTA
Province	AB
Postal Code	T7X 3W8

### **Amenities**

Amenities	Deck, Detectors Smoke, Hot Water Natural Gas, Vaulted Ceiling
Parking	Double Garage Attached

### **Interior**

Interior Features	ensuite bathroom
Appliances	Dishwasher-Built-In, Dryer, Garage Control, Garage Opener, Microwave Hood Fan, Refrigerator, Stove-Electric, Vacuum System Attachments, Vacuum Systems, Washer, Window Coverings
Heating	Forced Air-1, Natural Gas
Fireplace	Yes
Fireplaces	Mantel
Stories	2
Has Basement	Yes
Basement	Full, Finished

### **Exterior**

Exterior	Wood, Vinyl
Exterior Features	Fenced, Flat Site, Landscaped, Playground Nearby, Schools, Shopping Nearby
Roof	Asphalt Shingles

Construction Wood, Vinyl  
Foundation Concrete Perimeter

### **Additional Information**

Date Listed February 19th, 2025  
Days on Market 23  
Zoning Zone 91

DATA IS DEEMED RELIABLE BUT IS NOT GUARANTEED ACCURATE BY THE REALTORS® ASSOCIATION OF EDMONTON. COPYRIGHT 2025 BY THE REALTORS® ASSOCIATION OF EDMONTON. ALL RIGHTS RESERVED. Trademarks are owned or controlled by the Canadian Real Estate Association (CREA) and identify real estate professionals who are members of CREA (REALTOR®, REALTORS®) and/or the quality of services they provide (MLS®, Multiple Listing Service®)

Listing information last updated on March 14th, 2025 at 6:02am MDT