

## **\$599,900 - 68 Vernon Street, Spruce Grove**

MLS® #E4418818

### **\$599,900**

5 Bedroom, 3.50 Bathroom, 2,385 sqft

Single Family on 0.00 Acres

Spruce Village, Spruce Grove, AB

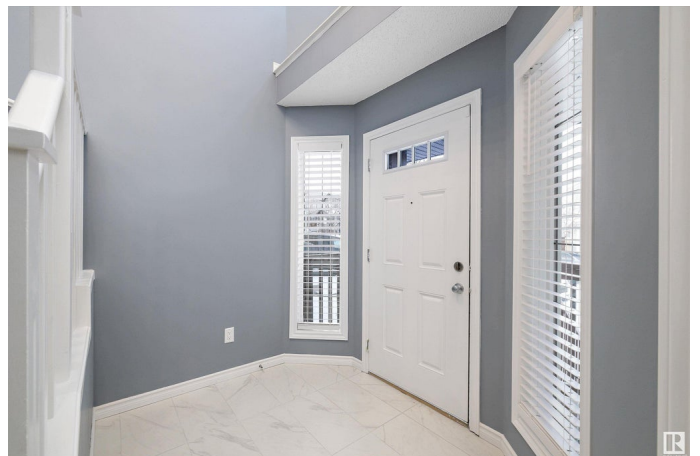
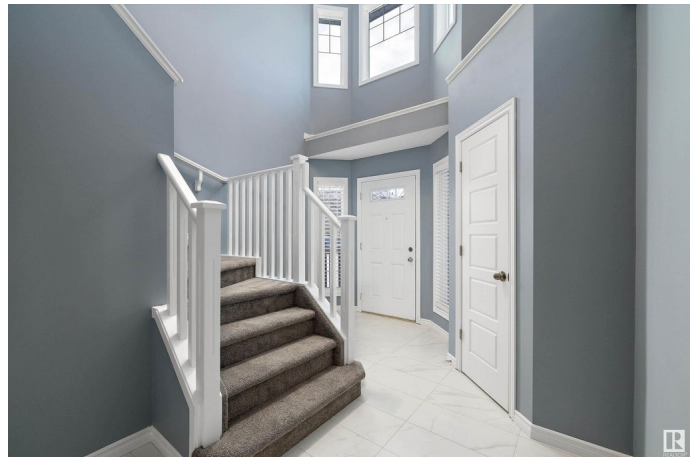
A Rare Find! 2384 Sq Ft Executive Style Two Storey in the Sought After Neighborhood of Spruce Village. Features 5 Bedrooms, 3.5 Bathrooms, Open Concept, High Ceilings, Lg Entrance, Brand New Chef's Kitchen, Island W/Seating, BI Microwave, Huge Walk Through Pantry, Ceiling High Cabinets, Lg Dining Area, Living Rm W/Gas Fireplace, Lg Office/Dining Rm, Main Floor Laundry, & 2 pc Bath. Upper Level: King Master W/5pc Ensuite, Dbl Sinks, Corner Soaker Tub, Separate Shower, & Oversized Walk in Closet, 2 More Lg Bedrooms, 4 pc Bath, & Gigantic Bonus Rm. Developed Basement: Family Rm, Huge Wet Bar/Kitchen W/Sink, Fridge, & Tons of Counter Space, 3 pc Bath W/Walk in Shower, Utility/Storage Rm, 2 Lg Bedrooms, Updates: All Appliances, Paint, Lights, Windows, Doors, & More! Fully Fenced, Landscaped Yard W/Lg Back Deck, Covered Front Deck & Dbl Att Garage. AMAZING LOCATION Close to Jubilee Park, Miles of Walking & Biking Trails, Playground, & Shopping W/Quick, Easy Access to HWY 16 & the Anthony Henday.

Built in 2009

### **Essential Information**

MLS® # E4418818

Price \$599,900



|                |                        |
|----------------|------------------------|
| Bedrooms       | 5                      |
| Bathrooms      | 3.50                   |
| Full Baths     | 3                      |
| Half Baths     | 1                      |
| Square Footage | 2,385                  |
| Acres          | 0.00                   |
| Year Built     | 2009                   |
| Type           | Single Family          |
| Sub-Type       | Detached Single Family |
| Style          | 2 Storey               |
| Status         | Active                 |

### **Community Information**

|             |                  |
|-------------|------------------|
| Address     | 68 Vernon Street |
| Area        | Spruce Grove     |
| Subdivision | Spruce Village   |
| City        | Spruce Grove     |
| County      | ALBERTA          |
| Province    | AB               |
| Postal Code | T7X 0C1          |

### **Amenities**

|           |  |
|-----------|--|
| Amenities | Deck, No Animal Home, No Smoking Home, Wet Bar |
| Parking   | Double Garage Attached                         |

### **Interior**

|                   |   |
|-------------------|---|
| Interior Features | ensuite bathroom  |
| Appliances        | Dishwasher-Built-In, Dryer, Garage Control, Microwave Hood Fan, Oven-Built-In, Stove-Electric, Washer, Window Coverings, Refrigerators-Two, Curtains and Blinds |
| Heating           | Forced Air-1, Natural Gas   |
| Fireplace         | Yes   |
| Fireplaces        | Insert  |
| Stories           | 3   |
| Has Basement      | Yes   |
| Basement          | Full, Finished  |

### **Exterior**

|          |                    |
|----------|--------------------|
| Exterior | Wood, Stone, Vinyl |
|----------|--------------------|

|                   |  |
|-------------------|--|
| Exterior Features | Fenced, Fruit Trees/Shrubs, Landscaped, Schools, Shopping Nearby |
| Roof              | Asphalt Shingles   |
| Construction      | Wood, Stone, Vinyl   |
| Foundation        | Concrete Perimeter   |

### **Additional Information**

|                |                    |
|----------------|--------------------|
| Date Listed    | January 22nd, 2025 |
| Days on Market | 88                 |
| Zoning         | Zone 91            |

DATA IS DEEMED RELIABLE BUT IS NOT GUARANTEED ACCURATE BY THE REALTORS® ASSOCIATION OF EDMONTON. COPYRIGHT 2025 BY THE REALTORS® ASSOCIATION OF EDMONTON. ALL RIGHTS RESERVED. Trademarks are owned or controlled by the Canadian Real Estate Association (CREA) and identify real estate professionals who are members of CREA (REALTOR®, REALTORS®) and/or the quality of services they provide (MLS®, Multiple Listing Service®)

Listing information last updated on April 20th, 2025 at 1:17am MDT