

\$159,900 - 113 10118 106 Avenue, Edmonton

MLS® #E4414650

\$159,900

2 Bedroom, 2.00 Bathroom, 860 sqft

Condo / Townhouse on 0.00 Acres

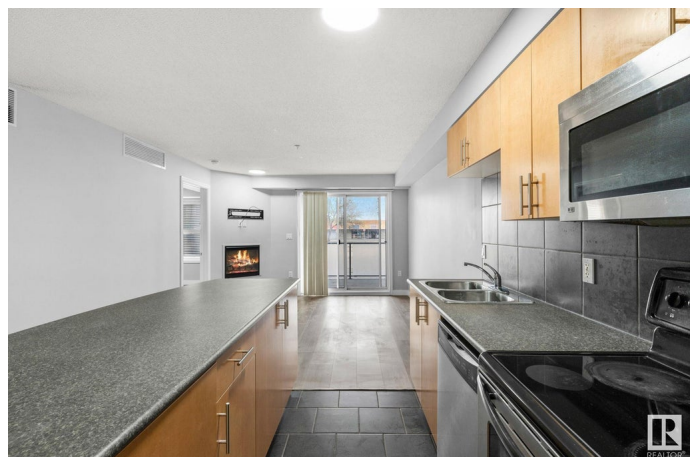
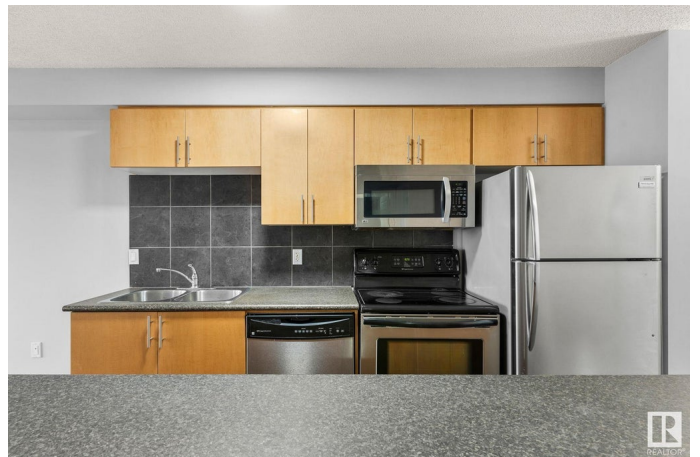
Central Mcdougall, Edmonton, AB

Welcome to Time Square! This 2 bedroom & 2 bathroom condo with in suite laundry is an investor or first time home buyers dream! With the appeal of owning, renting or getting an amazing risidual income from this condo as an airbnb, this is a no brainer! In the heart of downtown Edmonton, this condo is steps away from Rogers Place and the new downtown development WAREHOUSE PARK, projected to be an "Urban Oasis" opening late 2025. The oppoutunities are endless for an income stream starting in the low \$3,500 to \$4,500.00 + a month when there are any events at Rogers Place. This condo comes with one underground titled parking stall, and a secured entry keeping the condo safe from any unwanted visitors. By utilizing a pull out bed in the living room, this condo can be listed as a 6 person daily rental. Quit renting and start gaining equity in your own home!

Built in 2007

Essential Information

MLS® #	E4414650
Price	\$159,900
Bedrooms	2
Bathrooms	2.00
Full Baths	2
Square Footage	860



Acres	0.00
Year Built	2007
Type	Condo / Townhouse
Sub-Type	Lowrise Apartment
Style	Multi Level Apartment
Status	Active

Community Information

Address	113 10118 106 Avenue
Area	Edmonton
Subdivision	Central Mcdougall
City	Edmonton
County	ALBERTA
Province	AB
Postal Code	T5H 0B8

Amenities

Amenities	On Street Parking, Air Conditioner, No Animal Home, No Smoking Home, Patio, Secured Parking, Security Door
Parking	Heated, Underground

Interior

Interior Features	ensuite bathroom
Appliances	Air Conditioning-Central, Dishwasher-Built-In, Microwave Hood Fan, Oven-Built-In, Stacked Washer/Dryer, Stove-Electric, TV Wall Mount
Heating	Forced Air-1, Natural Gas
# of Stories	4
Stories	4
Has Basement	Yes
Basement	None, No Basement

Exterior

Exterior	Concrete, Stucco
Exterior Features	Public Transportation, Schools, Shopping Nearby
Roof	Asphalt Shingles
Construction	Concrete, Stucco
Foundation	Concrete Perimeter

Additional Information

Date Listed	November 26th, 2024
Days on Market	145
Zoning	Zone 08
Condo Fee	\$501

DATA IS DEEMED RELIABLE BUT IS NOT GUARANTEED ACCURATE BY THE REALTORS® ASSOCIATION OF EDMONTON. COPYRIGHT 2025 BY THE REALTORS® ASSOCIATION OF EDMONTON. ALL RIGHTS RESERVED. Trademarks are owned or controlled by the Canadian Real Estate Association (CREA) and identify real estate professionals who are members of CREA (REALTOR®, REALTORS®) and/or the quality of services they provide (MLS®, Multiple Listing Service®)

Listing information last updated on April 20th, 2025 at 1:32pm MDT